



# INSTRUCTIONS

-J03757

REV. 2005-11-15

## DYNA BOBTAIL FENDER KIT

### GENERAL

#### Kit Number

69710-06

#### Models

This kit fit is designed to install a bobtail (Wide Glide® style) fender on 2006 and later FXD, FXDX, and FXDL models.

#### Additional Parts Required

##### NOTES

The bobtail fender **is not** included in this kit. Primed or painted fenders are available and can be purchased separately from a Harley-Davidson Dealer.

If a prime-coated fender is used, test fit prior to painting, but have the fender painted before final installation.

### WARNING

The rider's safety depends upon the correct installation of this kit. Use the appropriate service manual procedures. If the procedure is not within your capabilities or you do not have the correct tools, have a Harley-Davidson dealer perform the installation. Improper installation of this kit could result in death or serious injury. (00333a)

##### NOTE

This instruction sheet references Service Manual information. A Service Manual for your model motorcycle is required for this installation and is available from a Harley-Davidson Dealer.

#### Kit Contents

See Figure 3 and Table 2.

### INSTALLATION

#### Remove Stock Fender

##### NOTE

Before removing the rear shock absorbers, you must securely support the vehicle. Failure to do so could allow the vehicle to tip over.

1. Place the motorcycle on a center stand with the rear wheel off the ground.

### WARNING

To prevent accidental vehicle start-up, which could cause death or serious injury, disconnect negative (-) battery cable before proceeding. (00048a)

2. Refer to the Service Manual and follow the instructions to remove the seat and disconnect the negative (-) battery cable. Save hardware for later use.

3. Refer to REAR SHOCK ABSORBERS REMOVAL for your model in the applicable Service Manual to remove the rear shocks.

### WARNING

After installing sissy bar/sideplate assembly, pull upward to be sure it is locked in position. While riding, a loose sissy bar/sideplate assembly can shift causing loss of control, which could result in death or serious injury. (00388a)

4. Refer to the Service Manual and follow the instructions to remove the stock rear fender. Note the location of all hardware for proper reassembly. Save passenger grab-strap and hardware for later use.
5. Remove tail lamp assembly and hardware. Remove circuit board/pin housing assembly from chrome tail lamp base. Discard base but save other components for later use.
6. Remove and save the seat retention hardware and fender-hole plugs.
7. Disconnect the wiring harness.
8. Remove and save the turn signal assemblies and the hardware that holds the front of the fender to the frame.
9. Remove and discard the stock fender support covers.

##### NOTE

The turn signal connectors will need to be removed to allow passage of wiring through the old and new fender supports. Refer to AMP Multilock section of the Service Manual for connector removal and installation procedures.

#### Install Wiring Harness Conduit

##### NOTE

Prior to mounting the conduit to the fender, the wiring harness should be installed through the conduit. See REAR FENDER in the Service Manual.

1. Obtain the wiring harness (removed earlier) and conduit from the kit. Refer to the instructions packaged with the Wiring Harness Conduit Kit or the Service Manual for conduit location and installation.
2. Obtain the fender-hole plugs removed earlier and install as needed on the new fender.

#### Install Tail Lamp and License Plate Bracket

1. See Figure 3. Obtain the tail lamp/license plate bracket (12), and stud and spacer plates (4) from the kit.
2. Position bracket under the rear fender (A).
3. Seat bracket into rear fender and align holes.

4. Install bracket to rear fender using the stud and spacer plates.

**NOTE**

There is only one way to assemble the stud and spacer plates, as the holes only line up one way. Note the spacer protruding through the outside of the rear fender. The rear fender support covers (10 and 11) will line up with the spacer and the turn-signal stand-offs (5) with the covers.

5. Snap retainer boss on rear fender extension (1) into key hole slots on rear fender.
6. See Figure 1. Install stock circuit board (rotated 180° from its original position) to the tail lamp/license plate bracket, with the saved circuit board screw. Tighten screw to 40-48 in-lbs (4.5-5.4 Nm).

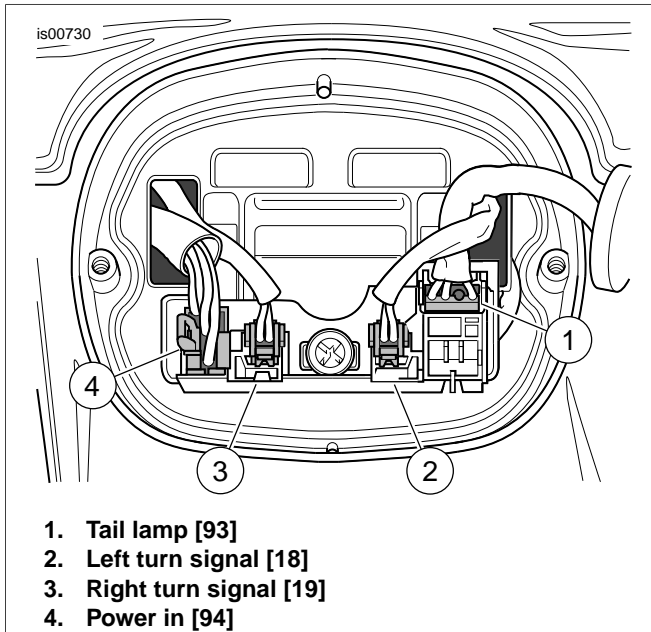


Figure 1. Rear lamp connections

Table 1. Wire Locations at Connectors

Function	No.	Type	Wire Color	Cavity
Right turn signal	19	2-pin multilock	V/BN	1
			BK	2
Left turn signal	18	2-pin multilock	V/BN	1
			BK	2
Tail lamp	93	4-pin multilock	BE	1
			O/W (HDI only)	2
			Open on domestic	3
			R/Y	4
Power in	94	6-pin multilock	BK	1
			O/W	2
			BN	3
			BE	4
			R/Y	5
			V	6

### Install Fender and Turn Signals

1. See Figure 3. Carefully place the rear fender (A) into position between the fender supports (B). Place fender support covers (10 and 11) from the kit over the fender supports.
2. Attach rear fender extension (1) to frame with push-in rivet (3).
3. Insert screws (13) through fender support covers (10 and 11), fender supports, and rear fender. Thread screws into rear fender mounting bracket (19) and tighten to 12-18 ft-lbs (16.2-24.4 Nm).
4. Attach turn signal stand-offs (5) on stud and spacer plates (4) with washer (6) and screw (7). Tighten screws to 12-16 ft-lbs (16.2-21.7 Nm).
5. See Figure 2. Insert turn signal wires through turn signal stand-offs, holes in the fender support covers, stud and spacer plates, and rear fender.

**NOTE**

The turn signal wire passes through the hole in the fender support covers and rear fender. The wire should be tied to the tail lamp/license plate bracket, snapped into the tab on the bracket, and routed out the back hole in the bracket.

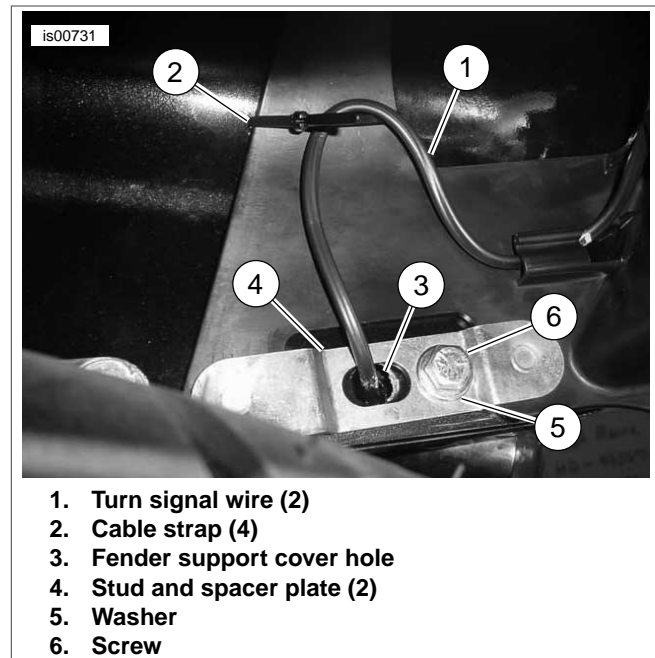


Figure 2. Turn signal wire routing and stand-off mounting

### Install Connectors to Circuit Board

1. See Figure 1. Install the connectors into the circuit board.

**NOTE**

Make certain the socket terminal slot (on the same side as the crimp tails) faces the connector release button.

2. Thread the wiring harness through the opening in the center of the license plate bracket, and insert the rear lamp (power in) connector into the proper circuit board socket.

**NOTE**

Because the circuit board is mounted 180° from its original position, the left-hand turn signal connector must be inserted

*into the right-side socket, and the right-hand turn signal connector must be inserted into the left-side socket.*

3. Connect left and right turn signal lamp connectors.
4. Rotate the stock tail lamp assembly 180° from its original position. Connect the tail lamp connector into the circuit board. Install the tail lamp assembly to the license plate bracket, using the two speed nuts previously removed.
5. Install tail lamp lens to base with the two screws previously removed. Tighten screws to 20-24 **in-lbs** (2.3-2.7 Nm).

### Install Reflectors

#### **WARNING**

**Federal Motor Vehicle Safety Standard (FMVSS) 108 requires motorcycles to be equipped with rear and side reflectors. Be sure rear and side reflectors are properly mounted. Poor visibility of rider to other motorists can result in death or serious injury. (00336b)**

1. See Figure 3. Install reflectors (14 and 15) from kit on fender support covers (10 and 11).
2. **For Domestic versions:**  
Affix rear reflector (9) to reflector bracket (8), and snap the tabs on the reflector bracket into slots in tail lamp/license plate bracket (12).

**For HDI versions:**

Affix rear reflector (18) to reflector bracket (17), and snap the tabs on the reflector bracket into slots in tail lamp/license plate bracket (12).

### Final Assembly

1. Refer to the Service Manual and follow the instructions to re-attach the negative (-) battery cable.

#### **WARNING**

**Be sure that all lights and switches operate properly before operating motorcycle. Low visibility of rider can result in death or serious injury. (00316a)**

2. Check the turn signals, and tail and stop lamp for proper operation.
3. Follow the instructions in the Service Manual to install the seat.

#### **WARNING**

**After installing seat, pull upward on seat to be sure it is locked in position. While riding, a loose seat can shift causing loss of control, which could result in death or serious injury. (00070b)**

4. See REAR SHOCK ABSORBERS INSTALLATION for your model in the Service Manual to re-attach the shock absorbers to the rear fork.

# SERVICE PARTS

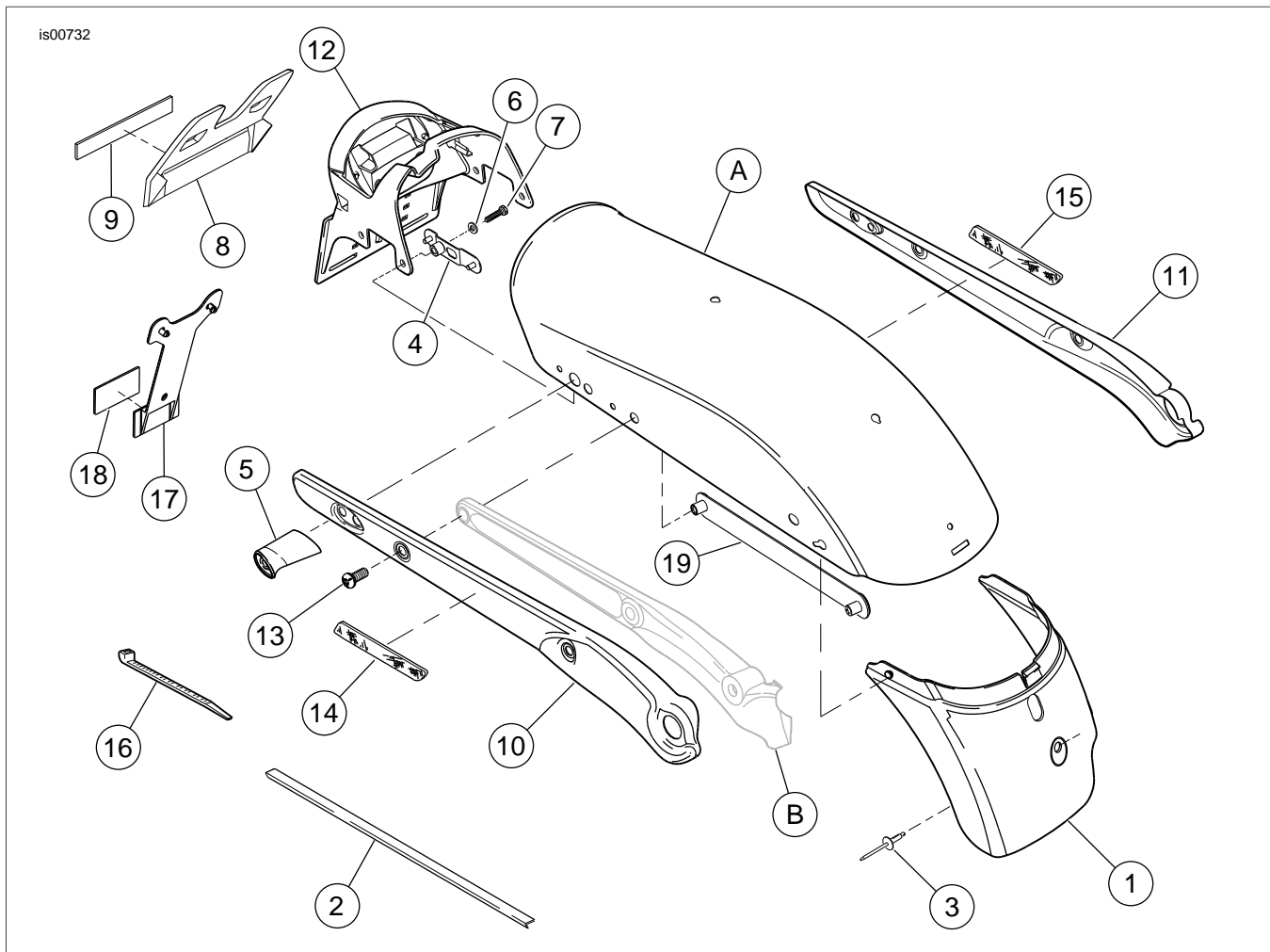


Figure 3. Service Parts: Dyna Bobtail Fender Kit

Table 2. Service Parts: Dyna Bobtail Fender Kit

Item	Description (Quantity)	Part Number	Item	Description (Quantity)	Part Number
1	Extension, rear fender	59598-06	12	Bracket, tail lamp/license plate	59546-06
2	Conduit, wire harness	70540-02	13	Screw, 3/8-16 x 1 in. (4)	4512
3	Rivet, push-in	8563	14	Reflector, right (red)	59287-92
4	Plate, stud and spacer (2)	59551-06	15	Reflector, left (red)	59288-92
5	Stand-off, turn signal (2)	68821-00	16	Strap, cable (4)	10065
6	Washer	6702	17	Bracket, license (HDI only)	60123-02
7	Screw, 5/16-18 x 1-3/4 in.	2887WA	18	Reflector, rear (red, HDI only)	59259-90
8	Bracket, reflector (domestic)	60019-93A	19	Bracket, rear fender mounting (2)	59484-06
9	Reflector, rear (red, domestic)	59988-72A	A	Rear fender, bobtail (not part of kit)	
10	Cover, fender support, right	59893-06	B	Fender support (not part of kit)	
11	Cover, fender support, left	60007-06			